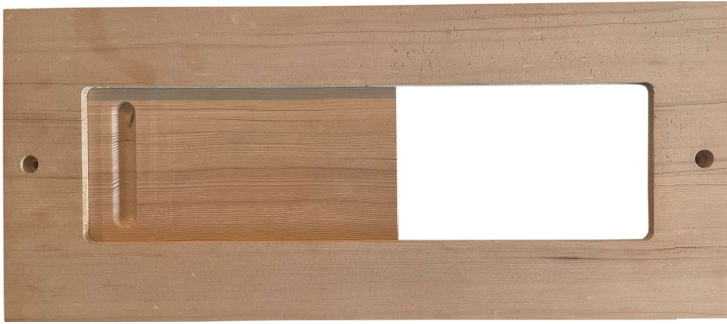


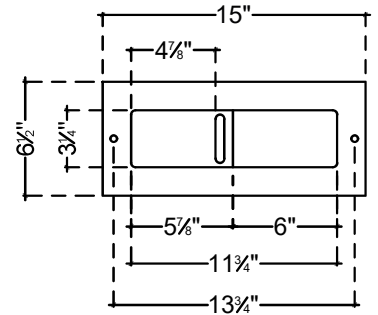
# VENT OUT

## CEILING OR WALL-MOUNTED VENT COVER

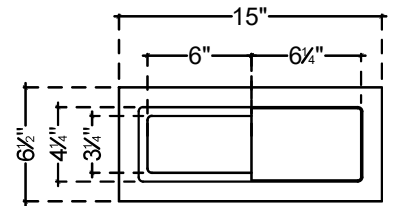
### VENT-OUT-125



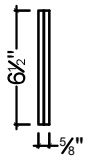
#### DIMENSIONS



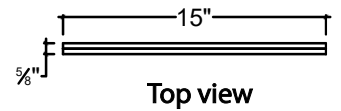
Front view



Back Mounting


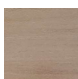

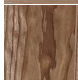

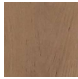


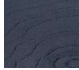



Side view



Top view

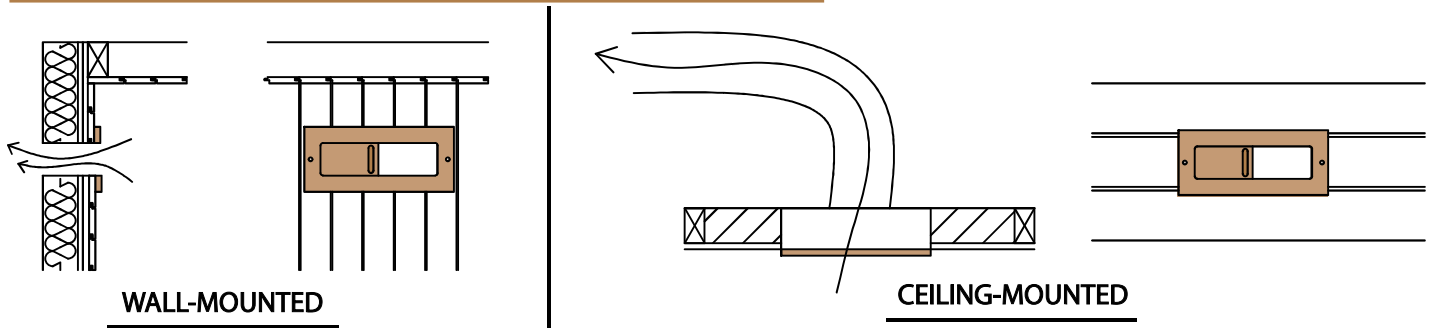
#### AVAILABLE WOOD

Texture	Type	Texture	Type
	Cedar		Hemlock
	Aspen		Radiata Pine
	Nordic Spruce		Thermo Light Alder
	Magnolia		California Redwood
	Black Taika		Thermo Dark Alder

#### FEATURES

Proper ventilation is essential for the optimal operation of a sauna room. The outlet ventilation system is a crucial component, ensuring the circulation of fresh air within the space. Open and close the vent to control the airflow.

#### FIXTURES INSTALLATION INSTRUCTIONS



WALL-MOUNTED

CEILING-MOUNTED

The outlet ventilation can be installed on the wall or on the ceiling. When it is installed on the wall, it should be positioned 4 inches away from the ceiling. When the vent out is installed on the ceiling, all the vapor goes through a pipe installed on the ceiling. For installation, use a drill and 2 screws to fix it on the wall or on the ceiling.