

# NUVO SAUNA LIGHT

## WALL-MOUNTED LIGHT

### SF77-137

### COMPLIANCE



Safety Listing:



|                       |                                     |
|-----------------------|-------------------------------------|
| UL Application:       | Wall                                |
| Energy Star:          | No                                  |
| DLC Approved:         | No                                  |
| ADA Compliant:        | No                                  |
| CA T20/T24 Rationale: | T20 Exempt - Fixtures Not Regulated |
| California Status:    | Lawful for sale in California       |
| Title 20/24 Status:   | Lawful for sale                     |
| California Prop 65:   | Lead                                |
| RoHS Compliant:       | Yes                                 |

### MATERIALS

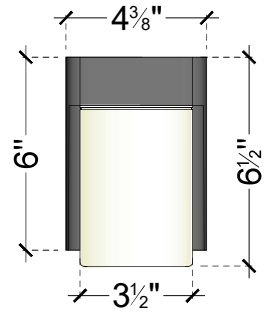
Aluminium and white glass.

### AVAILABLE COLOR

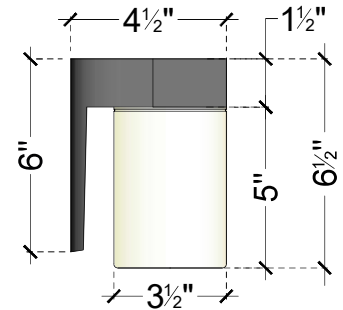
Black

### FEATURES

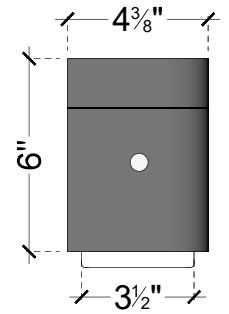
Nuvo's 1 light is perfect for wet areas, combining functionality and style with its finish and white glass cylinder. This downlight fixture is designed for efficient illumination, requiring one (1) A19 bulb for optimal performance. With a hardwire connection, it ensures a secure setup. RoHS compliant, it reflects adherence to environmental standards.



Front view



Side view



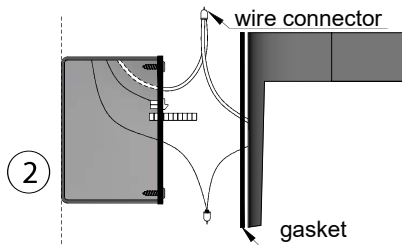
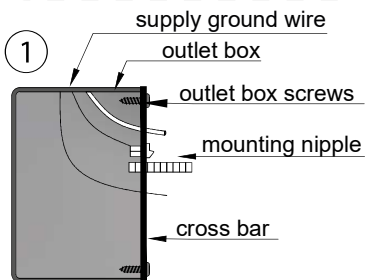
Back Mounting

### SPECIFICATIONS

|                         |                    |
|-------------------------|--------------------|
| Bulb Type Incandescent: | A19 (Not included) |
| Max Wattage:            | 100 W              |
| Voltage:                | 120V               |
| Weight:                 | 2.46 lb.           |
| Installation:           | Wall-Mounted       |
| Up/Down Installation:   | Down               |
| 1 Bulb:                 | Incandescent       |
| Number of lamps:        | 1                  |
| Fixture Type:           | Wall Sconce        |

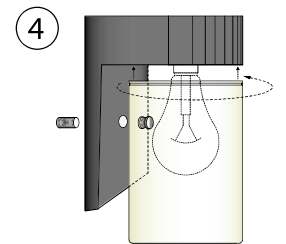
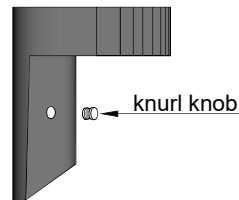
### FIXTURES INSTALLATION INSTRUCTIONS

- Remove existing screws from outlet box.
- Assemble 2 mounting screws with crossbar. Fasten crossbar to outletbox.



- Connect the wires: attach black fixture wire to black supply wire; white fixture wire to white supply wire. Don't mix them up!
- When fixture has ground wire, secure to the green wire binding screw or to supply ground wire.

- Assemble fixture over mounting screw.
- Secure with knurl knob and screw bulb into socket.



- "A" type bulb 100 W max.
- Place glass in place by turning clockwise until secure.